

Arista Networks Telemetry Application for Splunk®

Inside

Splunk Key Features

- Telemetry extension - An Arista supported package that collects facts from the EOS system
- Splunk Universal Forwarder RPM - provided by Splunk
- Eos CLI For Splunk extension - Provides access to and persistent storage for the most common Splunk Universal Forwarder configuration items from the EOS CLI
- Arista Networks Telemetry Application for Splunk® application built for the Splunk server dashboard

Arista Networks and Splunk have partnered to introduce Arista's Network Telemetry Application for Splunk, providing network operators fine-grained visibility into application performance and network-wide monitoring capabilities. This flexible solution integrates with both industry standards and customer specific devops deployments. The Telemetry Application for Splunk is easy to deploy on Arista Network switches and leverages extensions to Arista's Extensible Operating System (EOS™), Arista's ground-breaking network operating system.

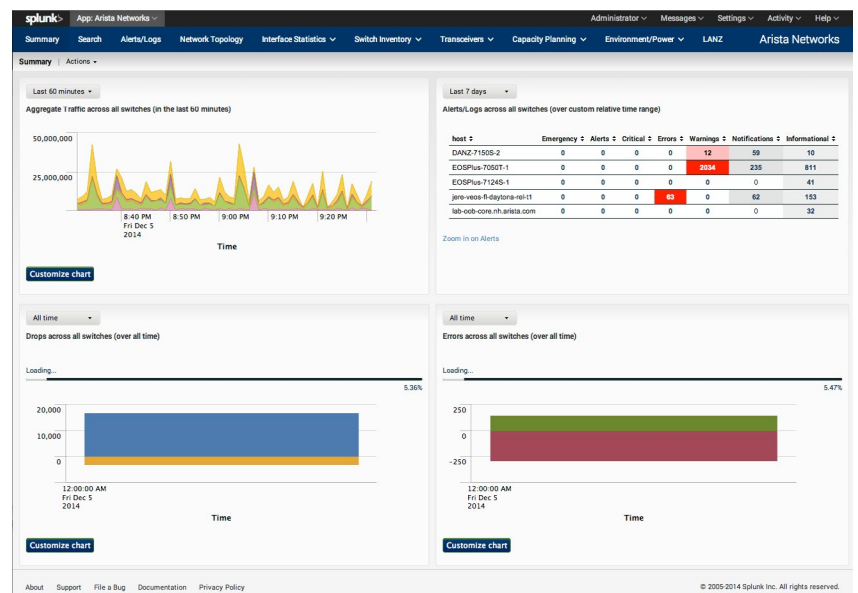


Figure 1: Arista Networks Telemetry for Splunk Summary Dashboard

The EOS Telemetry application indexes switch inventory, topology, interface counters and statistics, syslog and LANZ data. These indexes are configurable via the EOS CLI or by manipulating the underlying Splunk Forwarder config files. This data is then exported to the Splunk server via the Universal Forwarder. Unstructured ad-hoc data can also be forwarded to the Splunk Server from the network. The prebuilt Telemetry Application for Splunk® dashboard, views, searches and add-ons can either be extended and customized, or you can use the data pushed into Splunk from Arista in your own queries and searches.

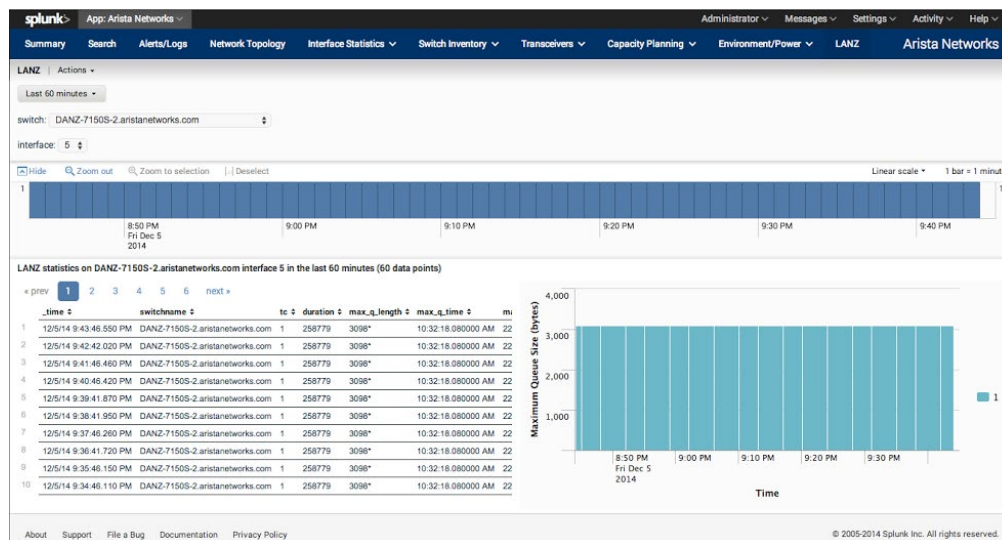


Figure 2: Arista Networks Telemetry for Splunk LANS Dashboard

The Telemetry Application for Splunk can be deployed as a set of packages via automation systems or via standard CLI based operations. Once deployed and installed, the customer has a choice of CLI or native file configuration of the Splunk Universal Forwarder. This flexibility enables ease of test and deployment while providing direct access to the standard Splunk configuration files for customers that choose Splunk deployment server options.

Summary

For pricing and availability please contact your Arista sales team or sales@arista.com. If you'd like a demonstration of this software, please contact splunk@arista.com.

Santa Clara—Corporate Headquarters

5453 Great America Parkway,
Santa Clara, CA 95054

Phone: +1-408-547-5500

Fax: +1-408-538-8920

Email: info@arista.com

Ireland—International Headquarters

3130 Atlantic Avenue
Westpark Business Campus
Shannon, Co. Clare
Ireland

Vancouver—R&D Office

9200 Glenlyon Pkwy, Unit 300
Burnaby, British Columbia
Canada V5J 5J8

San Francisco—R&D and Sales Office 1390

Market Street, Suite 800
San Francisco, CA 94102

India—R&D Office

Global Tech Park, Tower A & B, 11th Floor
Marathahalli Outer Ring Road
Devarabeesanahalli Village, Varthur Hobli
Bangalore, India 560103

Singapore—APAC Administrative Office

9 Temasek Boulevard
#29-01, Suntec Tower Two
Singapore 038989

Nashua—R&D Office

10 Tara Boulevard
Nashua, NH 03062



Copyright © 2016 Arista Networks, Inc. All rights reserved. CloudVision, and EOS are registered trademarks and Arista Networks is a trademark of Arista Networks, Inc. All other company names are trademarks of their respective holders. Information in this document is subject to change without notice. Certain features may not yet be available. Arista Networks, Inc. assumes no responsibility for any errors that may appear in this document. April 12, 2017 05-0044-01